

Prepared by:
Dr Geoff Cockfield
University of
Southern Queensland



Sunshine Coast Infrastructure Report



State of the
Region Summit®

INVESTA 

Overview

- Infrastructure on the agenda
- National infrastructure coordination
- A regional approach
 - **Bottom up coordination**
- Sunshine Coast infrastructure
- Conclusions



Sunshine Coast Infrastructure Report



State of the
Region Summit®

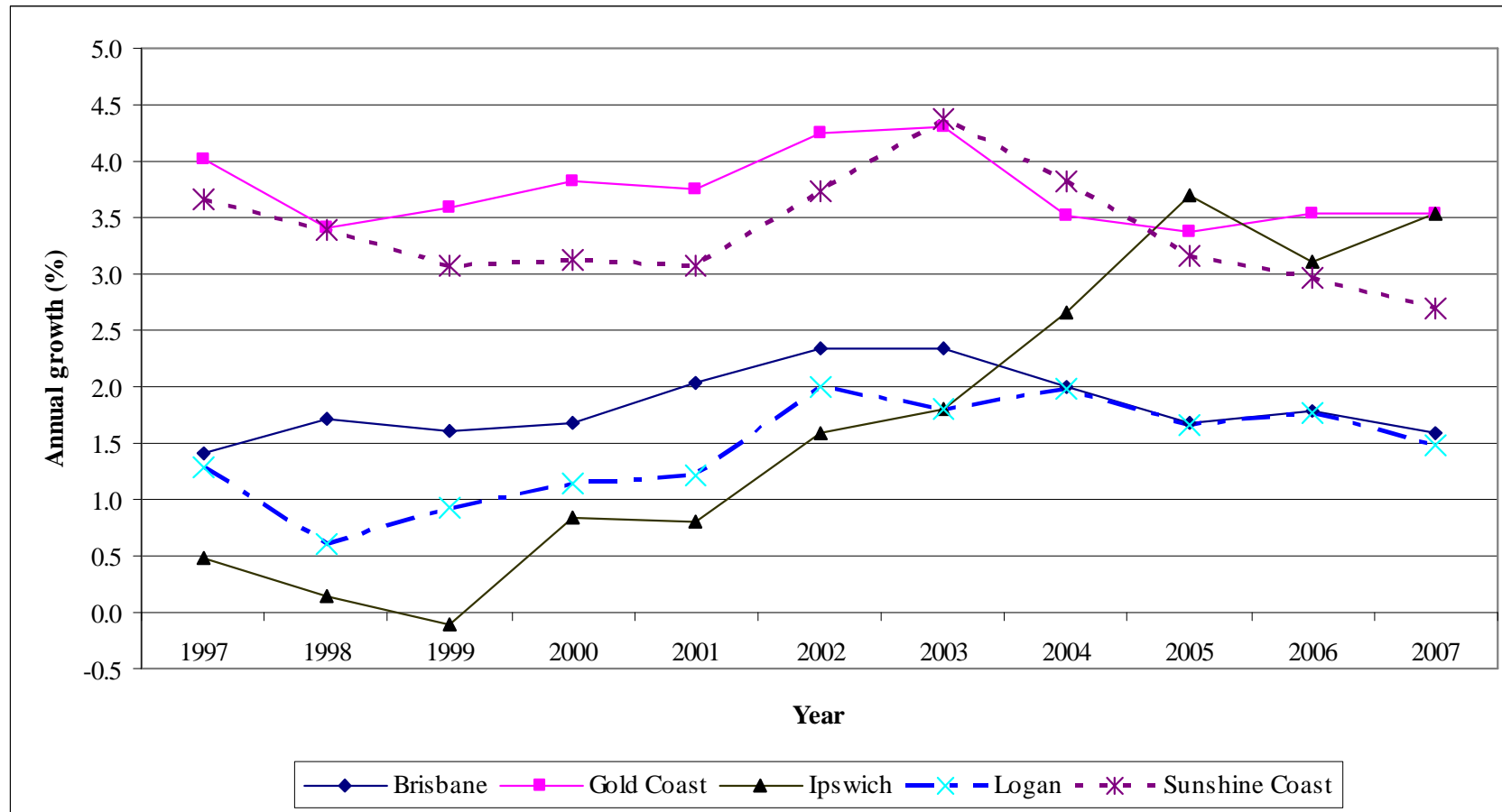
INVESTA 

Infrastructure on the agenda

- Sustained growth areas (eg SEQ)
- Economic growth
 - Demand and expectations
- Vertical fiscal imbalance
 - Reduced state spending and Commonwealth accumulation
- The shrinking public sphere & the private sector take-up 'gap'



Population growth in SEQ



Source: Office of Economic and Social Research (2008) QRSIS Database

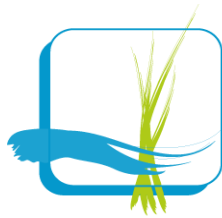


State of the
Region Summit®

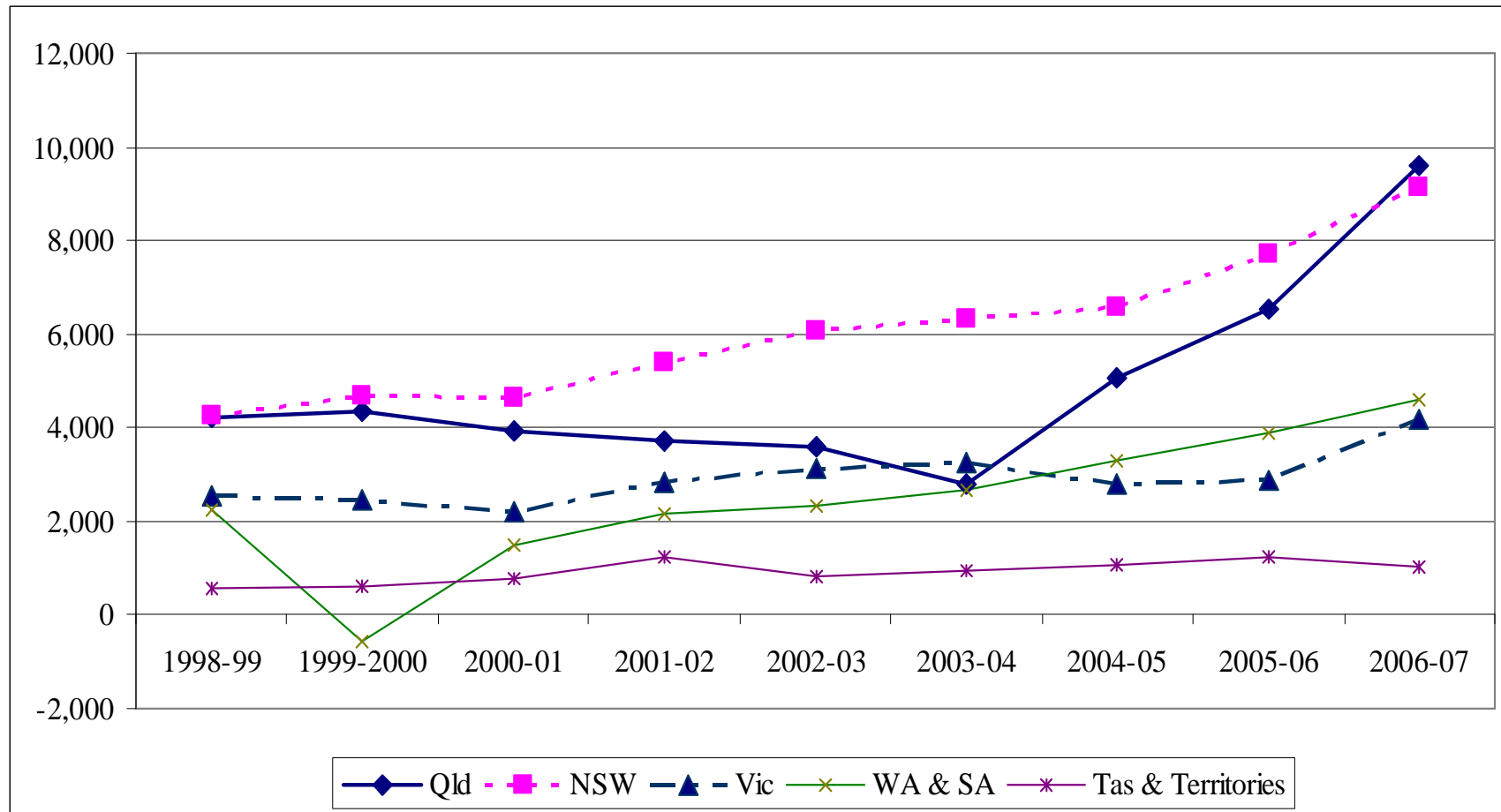
INVESTA 

Infrastructure on the agenda

- **‘Crises’ and coordination**
 - **Climate change / Millennium drought & water**
 - **Economic downturn**
- **From Keynes to Hayek and back**
 - **The return of fiscal policy**
 - **Possible deficit funding**
- **The state government domino effect**



Capital expenditure by state



Source: ABS Gross Fixed Capital Formation Catalogue 5512.0 (1999-2007)

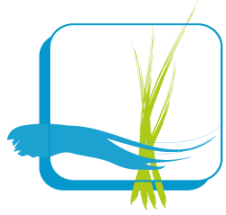


State of the
Region Summit®

INVESTA 

Infrastructure coordination

- **Centralisation**
 - **State agencies**
 - **Commonwealth statutory: Infrastructure Australia**
- **Managing a designated budget**
- **Reaction to perceived fragmentation**
- **Decision-making transparency**
- **Concentration of expertise**
- **Prioritisation**



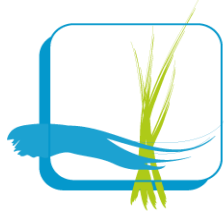
State of the
Region Summit®

INVESTA 

Infrastructure Australia

- **‘Balance’ of interests**
- **Rational planning framework**
- **Benefit cost techniques**
 - **Some non-monetary values**
- **Submissions approach**
 - **But must be in the IA format**
- **Economic and bottleneck priorities**

Sunshine Coast Infrastructure Report



State of the
Region Summit®

INVESTA 

The limits of the ‘IA model’

- The Hayek problem
- Still Federal ‘fragmentation’
- Identifying regional interconnections
- Comparing projects with different goals
 - The limits of monetisation
 - Skewed to market-based values
- Skewed participation and feedback
 - Potential for vested interests



State of the
Region Summit®

INVESTA 

Regional coordination

- **Regional infrastructure body**
 - **Oversight of public and private projects**
- **Balanced interests/expertise board model**
- **Managing upwards**
 - **State and Federal agencies**
 - **Private sector**
- **Canvassing for ideas**
 - **Including the non-conventional**



State of the
Region Summit®

INVESTA 

Regional coordination

- **Regional prioritisation**
- **Developing analytical expertise**
 - **Rational planning and BCA (to mirror IA)**
 - **But consider citizen and consumer preferences**
- **Financing and management**
 - **Recommendations on build, own, manage**



State of the
Region Summit®

INVESTA 

Reviewing proposals for the Sunshine Coast

- **Transport**
 - **Corridor projects (Road and rail)**
 - **Arterials in the region**
 - **Public transport**
 - **Short, medium and long terms**
 - **CAMCOS; bus network**
- **Water**
 - **Desalination & recycling**



State of the
Region Summit®



Transport projects: planned and proposed

Project	\$M
Bruce Highway Projects (Cooroy to Gympie \$3300m)	3840
Multi-modal Transport Corridor Projects	3260
Sunshine Motorway Projects	2042
East West Links	321
Other Road work	1114
Subregional cycle network	139
CoastConnect: Caloundra to Maroochydore quality bus corridor	297
Other Bus	104
Caboolture to Nambour: additional rail line	1556
CAMCOS: Beerwah to Maroochydore	3116

Source: SEQ Infrastructure Program and Plan 2008

Sunshine Coast Infrastructure Report



State of the
Region Summit®

INVESTA 

Reviewing proposals for the Sunshine Coast

- **Energy**
 - Conventional and alternative?
- **Education**
 - Public and private demand
 - Post-secondary participation
 - Post-secondary consolidation?
- **Health**
 - Population analysis (aging & birthing)
 - Hospital and health precincts

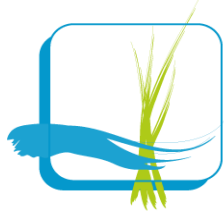


State of the
Region Summit®



Conclusions

- **SC one of the high growth areas**
 - **General infrastructure demand**
 - **Specific needs (Health, public transport?)**
 - **Citizen preferences (public spaces; town centre?)**
- **On a major corridor**
 - **National and state interests**



State of the
Region Summit®



Conclusions

- **Increasing central coordination**
 - **But still govt 'silos'**
- **Potential for big spends**
 - **But economic downturn may limit future funds**
 - **And potential for big waste**
- **A case for bottom-up coordination**
 - **But need to fit with IA and similar**
 - **But can be proposing not just receiving**